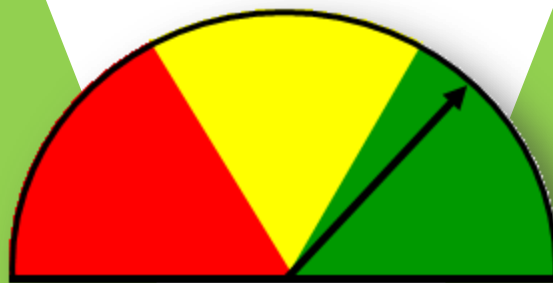


# The Lean Network Peer Group

Teach • Change • Perform •



**Business Peer Networking Group**



# The Logical Step For Leaders of Continuous Improvement Who Want to Continue to Learn



## LEAN PEER GROUP:

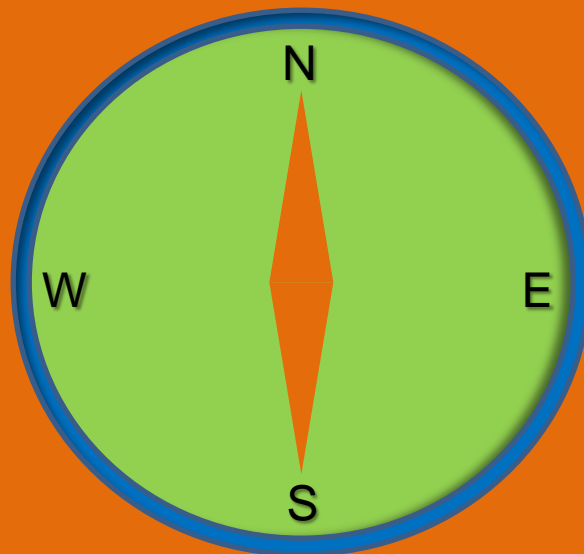
- Member driven learning
- Member driven agendas
- Facilitated and coordinated activities
- Lean operations benchmarking
- Collaborating and networking with peers
- Plant Tours
- Candid feedback from experienced manufacturing executives
- Sharing lean principles and practices
- Exploring people issues faced when implementing change
- Discussing the issues regarding the Lean Champion role
- Observing and practicing the implementation of Continuous Improvement at host companies
- Sharing and collecting Lean / Continuous Improvement resources



## **TCP Mission:**

To build a regional network of peers that support, encourage, and share best practices and continuous improvement techniques. The network will be structured so that members can learn from each other, mentor each other, develop each other, and assist each other in the continuous improvement journey. Members who are just beginning the journey or who have been paving the road for several years can share, discuss, and improve as a network of informational resources assisted by the tools, training, and capabilities of the members.

# Define a Direction and Help Each Other to Get to that Destination



## **TCP Members:**

Companies within 1 hour travel from each other.

Companies who are not in direct competition with each other.

Companies who may utilize each other's capabilities and/or services.

Companies who are willing to host one meeting each year.

Management personnel who are responsible for continuous improvement in their company or organization.

## **TCP Subject Examples:**

Strategic Planning

Policy deployment

Cultural Transformation

Internal Communication Tools/Methods

Use of Lean Tools: (Samples)

5S

Set-up Reduction

Standard work

Kaizen

Kanban

Visual Tools

Project Management Tools and Techniques

Lean Leadership Tools

Metrics to attain and maintain performance

Inputs and Suggestions from Facility Tours

Benchmarking

General business and operational issues

beyond Lean (Green, Safety, People, etc.)

# A Give and Take Partnership



## TCP Facilitator:

Coordinate and facilitate the TCP meetings

Develop and build the team relationships

Provide a sounding board for ideas, questions, and techniques

Encourage communication and involvement of the members

Provide tools and resources to support team member activities

Assist team members to build their internal improvement plans and measurements with regular individual mentoring sessions.



Teach



Change



Perform





Business Peer Networking Group

## What Does a TCP Membership Provide?

### TCP Membership

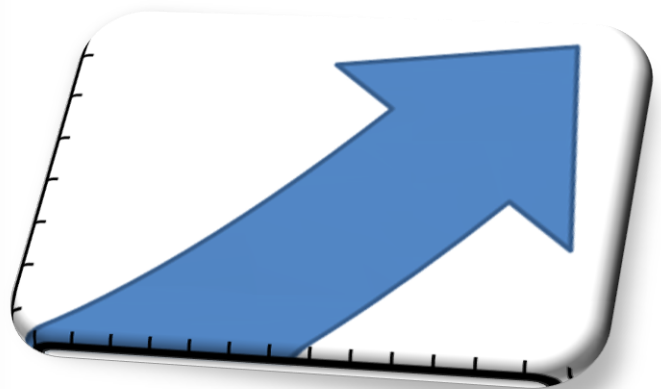
Fee: \$4,800 / year

#### Benefits:

- Bi-monthly meetings
- Access to web portal
- Speaker session
- Golf tournament
- One day world –class  
Lean Assessment
- Tiered and discounted  
consulting with Optima :
  - ✓ 1-200 hrs @ \$175/hr
  - ✓ 201-300 hrs @ \$160/hr
  - ✓ 301-up hr @ \$145/hr

You can pool hours between member companies for shared training events.  
(Must be booked hours to obtain tiered discount)

## Get An IMPACT



*Member driven content and scheduled through annual planning session to ensure you get the benefits you are looking for*



TCP PEER NETWORK GROUP

MEETING FORMAT	PURPOSE	REQUIREMENTS
<p><b>Group Meetings</b> will be held every eight weeks at a host company and will be facilitated by Optima. Meetings will be approximately 4 hours long. One meeting per year will be held at Optima’s office. The group meeting agenda will reflect the group’s issues with special attention given to the host’s issue or issues. Group members are expected take responsibility for their own learning and to be candid and challenge one another as we share business updates, project progress, and results.</p> <p><b>Tours</b> of the host company will be given on meeting day to group members in order to share successes and provide ideas to those touring. In return for providing tours, the host company can expect candid suggestions for improvement as well as compliments on the successes shared. Tours can also be arranged for your teams to “see what you’ve seen”.</p> <p><b>Guest Speakers</b> will on occasion be made available to share specific expertise with our group members as well as for members of their staff. These may be scheduled separately from our group meetings or they may be a part of the group meeting. Group members can attend these events at no added cost; team members will pay a nominal fee.</p>	<p>This networking group is intended to be a resource for those who have been made responsible by their companies to manage and improve operations by linking members with similar business issues together.</p> <p>Members understand lean tools and techniques and have implemented them in their operations and they are seeking to further their knowledge and refine their skills at leading people through lean implementation.</p> <p>Additionally, members understand that there are many “non lean” business issues facing them that they may seek the advice of their peers for. Members will <b>teach</b> each other ways to <b>change</b> processes that lead to improved <b>performance</b>.</p>	<p><b>Company Requirements</b></p> <p>Each member company will be required to:</p> <ul style="list-style-type: none"> <li>• Host at least one meeting annually</li> <li>• Provide a tour to participating companies when requested</li> <li>• Faithfully attend group meetings</li> <li>• Hold members accountable to both the group and their own company</li> <li>• Engage in information and idea exchange to help the team learn and improve in their CI initiatives and capabilities</li> <li>• Build professional relationships/friendships that carry beyond the scheduled meetings</li> <li>• Submit an annual membership fee of \$4,800</li> </ul>



**For additional information or to attend a meeting as a guest,**

**Please contact:**

**Laurie J. McNicoll**

P: 920.425.1005  
 F: 920.425.1009  
 C: 920.609.4435

[laurie.mcnicoll@optimatcp.com](mailto:laurie.mcnicoll@optimatcp.com)

1861 Nimitz Drive  
 De Pere, WI 54115



# Won't You Join Us?





**Teach** – **Change** - **Perform**

## **Lean Network Group**

Facilitated by:

Optima Associates, Inc.  
1861 Nimitz Drive  
De Pere, WI 54115  
920-425-1005  
[www.optimanow.com](http://www.optimanow.com)